



EXPRESSWAY S36, BRIDGE REHABILITATION

AUSTRIA

On behalf of ASFINAG Bau Management GmbH, convex ZT GmbH carried out the complete tender and detail design for the road and bridge rehabilitation for the section Feistritz – Zeltweg Ost, km 12,603 – km 23,626, RFB Scheifling of the S36 Murtal Expressway. The general rehabilitation was carried out in several steps in the years 2018 – 2019.

The rehabilitation measures of the 15 bridges depending on the damage pattern of the individual objects as well as their repair concept were:

- Repair without structural reinforcement
- Repair by means of structural reinforcement
- Repair by means of conversion to semi-integral system without structural reinforcement
- Rehabilitation by means of conversion to semi-integral system and structural reinforcement

The longest of the rehabilitated bridges were 96 m (K9 – Ingeringbachbrücke, 4 spans), 56.5 m (K8 Spielbergbrücke, 3 spans) and 53.0 m (K1 Raßnitzbrücke).

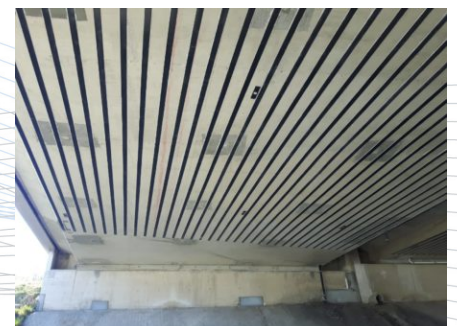
The roadway rehabilitation included approx. 11 km of the Scheifling directional roadway including four junctions. Poltnigg & Klammer ZT GmbH was commissioned by convex ZT GmbH to design the road rehabilitation.

Client:

ASFINAG Bau Management GmbH, Austria

Location:

S36 Murtalstrasse



Objects:

15 bridges with a length up to 96 m

Length of road repair:

approx. 11,000 m / 4 junctions

-

Photos:

convex ZT GmbH