



## HEPP MESTIACHALA 1 & 2

### GEORGIA

Two diversion hydroelectric powerplants will be built at the Mestiachala river in the Mestia Municipality, Georgia. At Mestia 1, two Pelton turbines with 6 m<sup>3</sup>/s turbine flow each will be installed. The net head is 207 m, the installed power will be 20 MW. The length of the penstock between the water intakes and the powerhouse is 1.800 m. At Mestia 2, three Pelton turbines with 6 m<sup>3</sup>/s turbine flow each will be installed. The net head is 196 m, the installed power will be 30 MW. The length of the penstock between the water intakes and the powerhouse is 7.260 m. Being in a sensitive area of the touristic Svaneti region, all structural activities will be reduced to a minimum.

On behalf of the Georgian and Austrian investors, convex ZT GmbH and Hydroconsult GmbH are jointly responsible for the preparation of the basic and construction permit engineering, the civil works tender and the civil works detail design.

**Owner:**

JSC Svaneti Hydro, Georgia

**Design discharge:**

12 m<sup>3</sup>/s / 18 m<sup>3</sup>/s

**Net head:**

207 m / 196 m

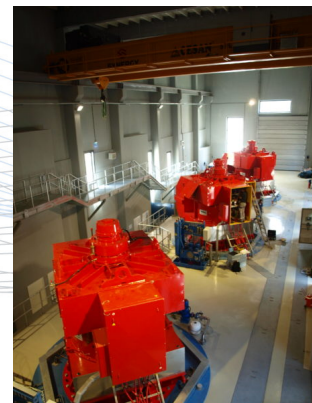
**Length of penstock:**

1.800 m / 7.260 m

**Capacity:**

20 MW / 30 MW

**Operation:**



2019 resp. 2020

-

**photos:**

B. Sackl, T. Uzunoglu



convex ZT GmbH  
CRN FN 194475 v  
VAT ATU60801715

Am Katzelbach 7, A-8054 Graz, Austria  
T +43 316 28 11 80 - 0 • office@convex.at  
www.convex.at

Steiermärkische Bank  
IBAN AT86 2081 5021 0040 5451  
BIC STSPAT2GXXX